

# H2O-PRO

## COLD, AMBIENT & HOT WATER DISPENSER OPERATION MANUAL



Please read the instructions completely before using this product.

Please read these instructions completely before operating this unit

Intended for water pressure between 25~60 psi.  
If water pressure is more than 60 psi, please use a water pressure regulator.

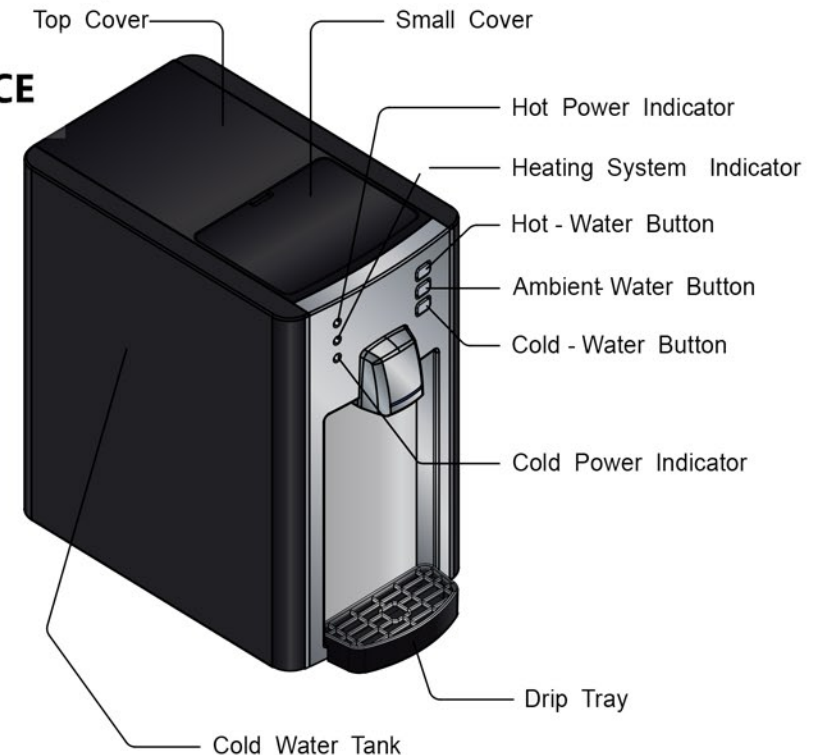
# H2O-PRO

## COLD, AMBIENT & HOT WATER DISPENSER OPERATION MANUAL



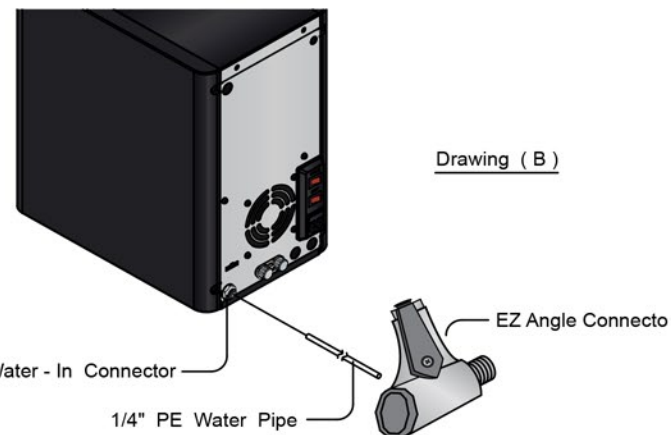
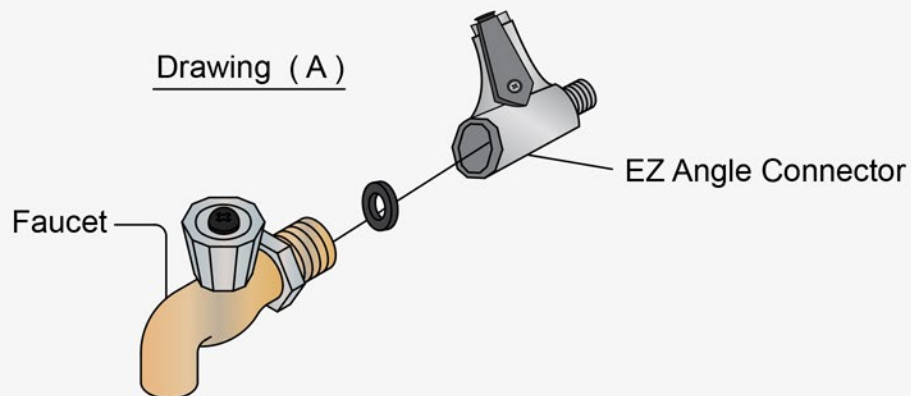
PREFACE	COVER
INSTALLATION	1 - 2
FILTER REPLACEMENTS	3 - 4
LEAK DETECTION & HOT WATER RESET	5
CLEANING & MAINTENANCE	6

### PREFACE



## 1. WATER LINE SET-UP

1- Take apart your water tap. Then put on the EZ Angle Connector valve. See drawing (A)



2- Connect the 1/4" PE water line between the EZ Angle Connector and the Water In Connector on the back of your H2O-PRO. See drawing (B).

## 2. WATER DISPENSER SET-UP

1 - After water line is connected, please plug in electrical outlet, and then:

a) Press the room temperature water button to make sure water line is working and fill one full glass to flush/clean filters. Then let unit sit for 5 minutes.

b) Press and hold cold water button for at least 45 seconds.

c) Press hot water button (first press releases safety), then press and hold hot water for at least 45 seconds.

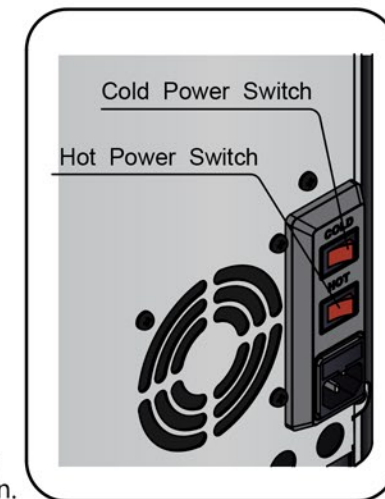
d) **DO NOT TURN ON COLD & HOT POWER SWITCHES UNTIL THE ABOVE STEPS ARE COMPLETED. TURNING ON HOT POWER BEFORE COMPLETING THE ABOVE STEPS WILL TRIGGER A SAFETY MECHANISM AND DISABLE HOT WATER TANK.**



\*\*Please push hot button twice before hot water can be drained. (The first press unlocks the safety. The second press dispenses hot water)

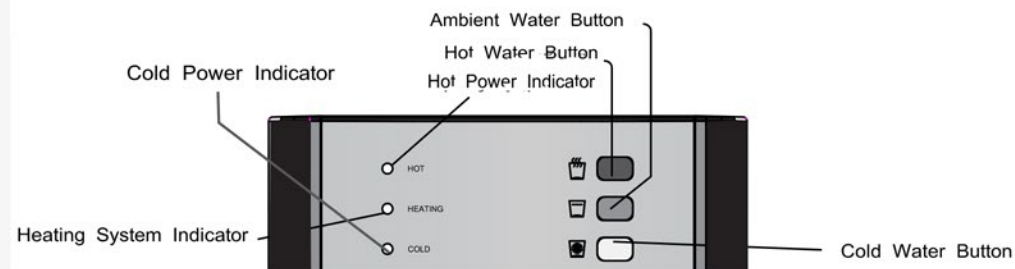
2- Turn on cold power switch. Cooling takes about 40 minutes. After cooling is complete, please push cold button for cold water.

As a safety measure, water dispensing stops after 1 minute. If you need more water, please press the water button again.



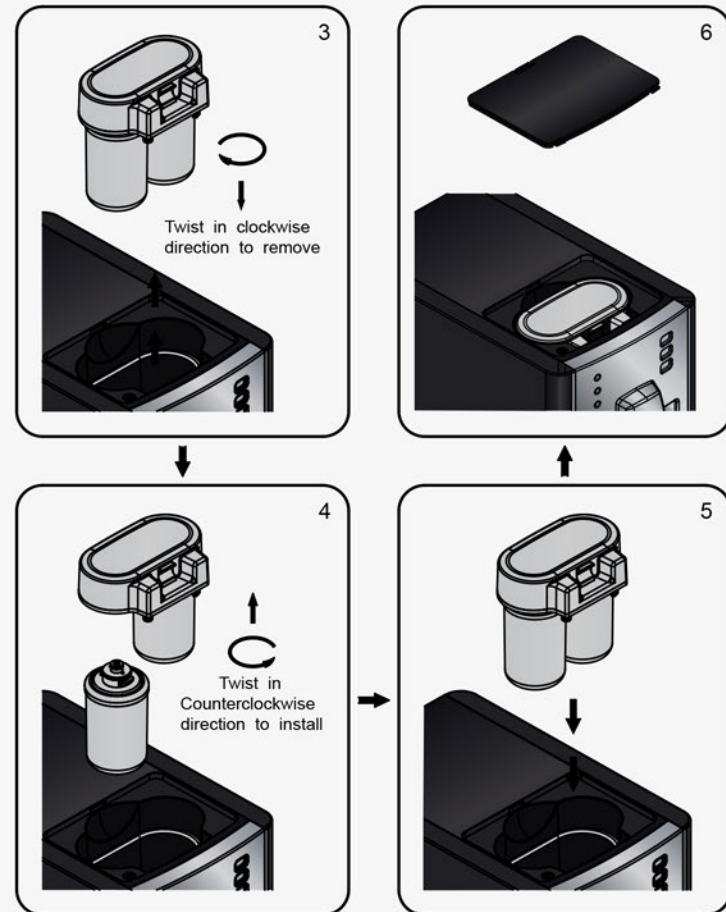
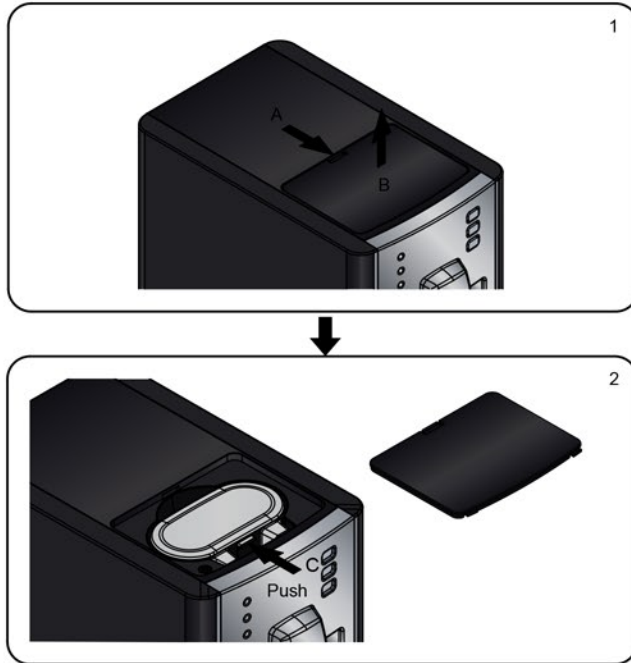
## 3. H2O-PRO OPERATION

- To dispense cold or ambient water, press the cold or ambient water button.
- To dispense hot water, press the hot water button twice; first press to unlock the safety, and hold it down on the second press to dispense hot water.
- Water will stop dispensing when any of the three water buttons is held down for more than 60 seconds. If you need more, water the let go of the button and then press it again.

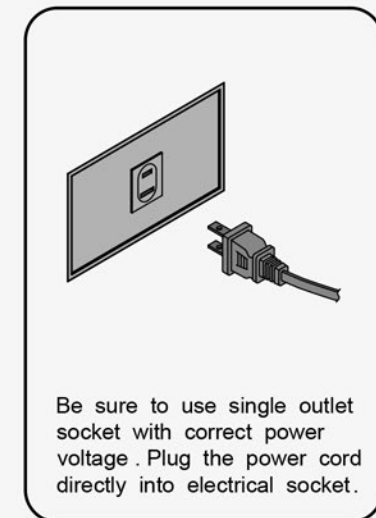
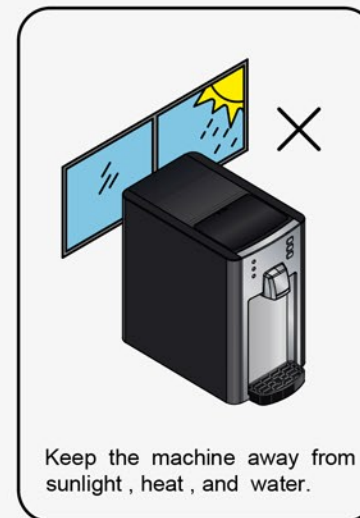
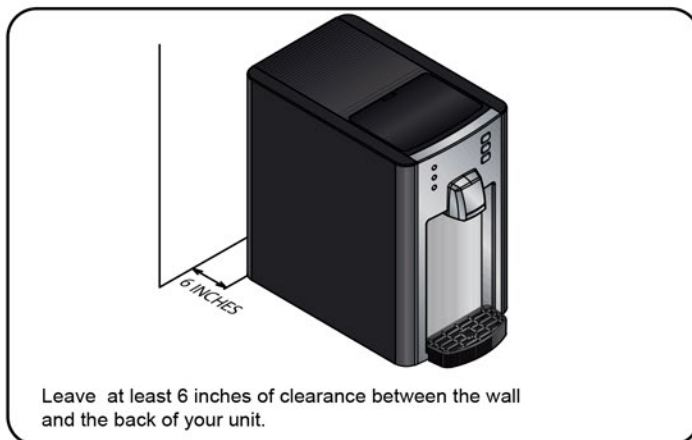


# REPLACEMENT OF FILTERS

- Drawing 1, push the latch (A) to open the top lid (B).
- Drawing 2, push the latch (C) in the filter head to allow the filtration system pop off.
- Drawing 3, Remove the filter clockwise.
- Drawing 4, Install the filter anti-clockwise.
- Drawing 5, Replace the filtration system.
- Drawing 6, Replace the top lid.



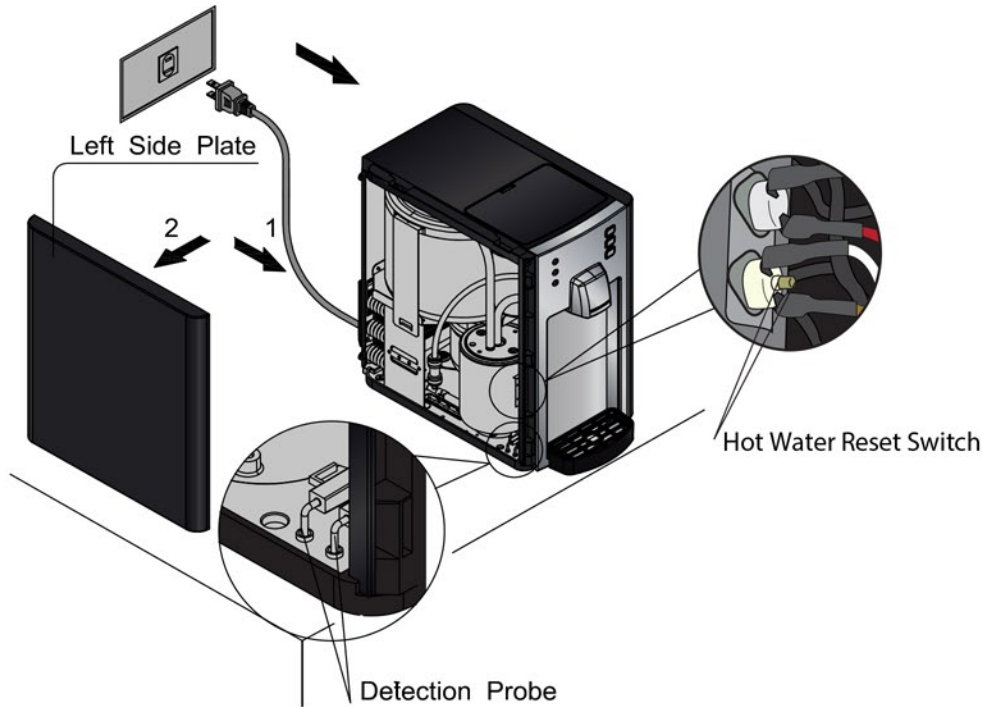
## SAFETY REMINDER



# LEAK DETECTION

When the leak detector has been activated:

- An LED light on the front tap will begin flashing.
- Please disconnect the electricity.
- Remove the left side panel, as shown below, and wipe any water from the base panel.
- Put the side panel back on the unit.
- If leaking continues please contact us immediately.

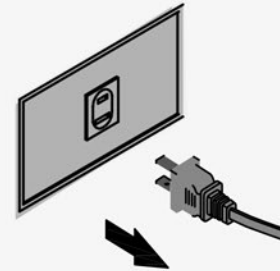


# HOT WATER RESET

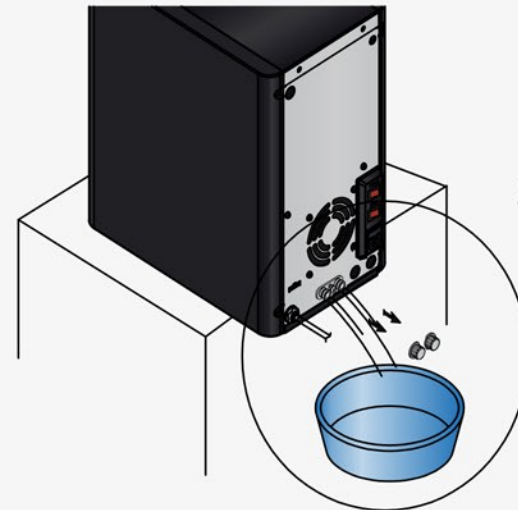
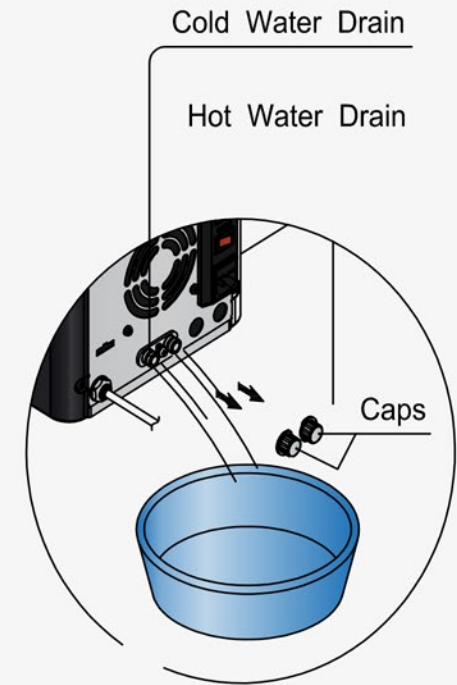
If the HOT WATER POWER was turned on before the completing steps on page 1, it is likely the hot water safety feature has been triggered, and the hot water heating is disabled. To reset the Hot Water please complete the following steps:

- Please disconnect the electricity, and make sure all power switches are OFF.
- Remove the left side panel as shown above, and locate the "Hot Water Reset Switch" on the front bottom corner as shown above.
- Press the "Hot Water Reset Switch" and place the side panel back on the unit.
- Please follow the set-up steps on page 1 before turning on the power switches.

# CLEANING AND MAINTENANCE



- Please make sure the machine is completely disconnected from electricity before cleaning.



- Remove the caps on top of the hot water and cold water drains. The remaining water in the tanks will drain out. Cleaning may start when both tanks are emptied. Please put the caps back when cleaning is done.