

# 1500P TOUCHLESS

H2O INC  
INTERNATIONAL H2O INC  
1(888) 982-8311  
sales@internationalh2o.com  
www.internationalh2o.com

18267 NE 4th Ct  
North Miami Beach FL 33162



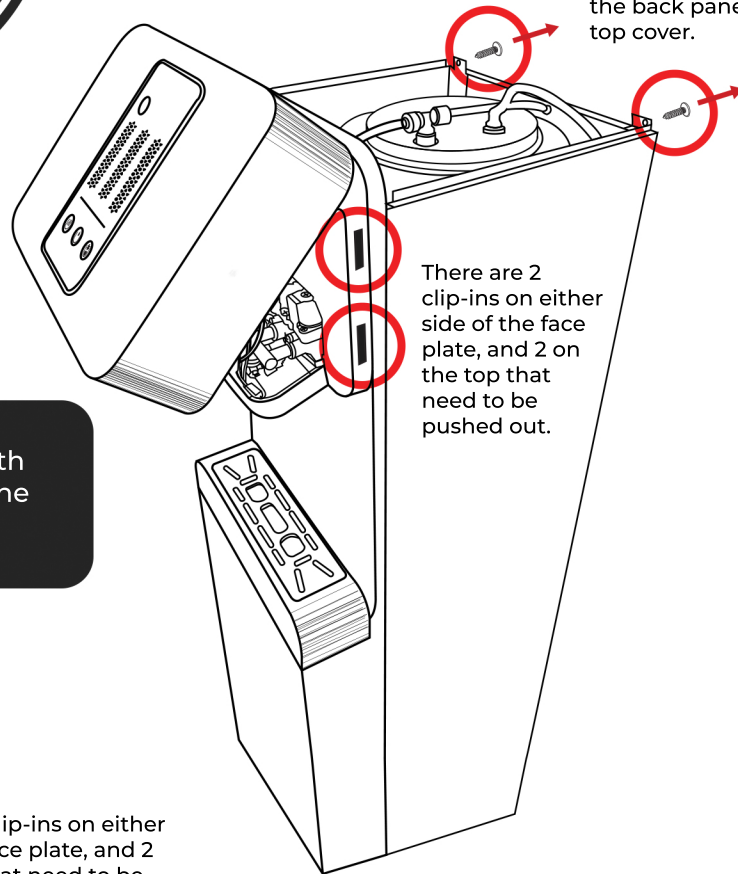
To troubleshoot your touchless system or adjust the touchless sensors, go through the following procedure:



1

Make sure the power is off and the unit is unplugged.

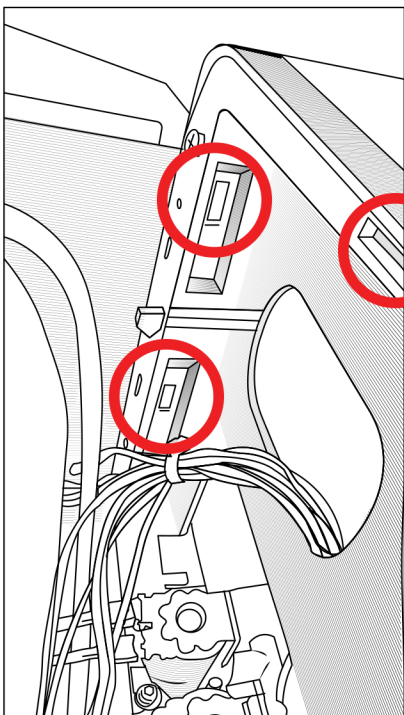
Remove the 2 screws from the back panel to remove the top cover.



There are 2 clip-ins on either side of the face plate, and 2 on the top that need to be pushed out.

2

Remove the Top Cold tank cover with the two screws on the top back of the unit.

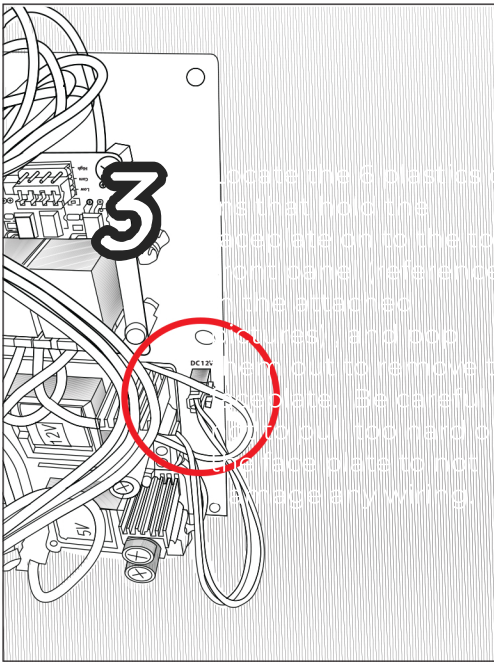


There are 2 clip-ins on either side of the face plate, and 2 on the top that need to be pushed out.

3

Locate the 6 plastic clip ins, 2 located on each side, and 2 located on the top, that hold the faceplate on to the top front panel, and pop them out to remove the faceplate.

**Be careful not to pull too hard on the face plate to not damage any wiring.**



4

If the unit does NOT have any water go ahead and plug power into the unit. If the unit does have water inside, unplug the DC12V plug located on the right hand side of the green board and then plug power into the unit.

5

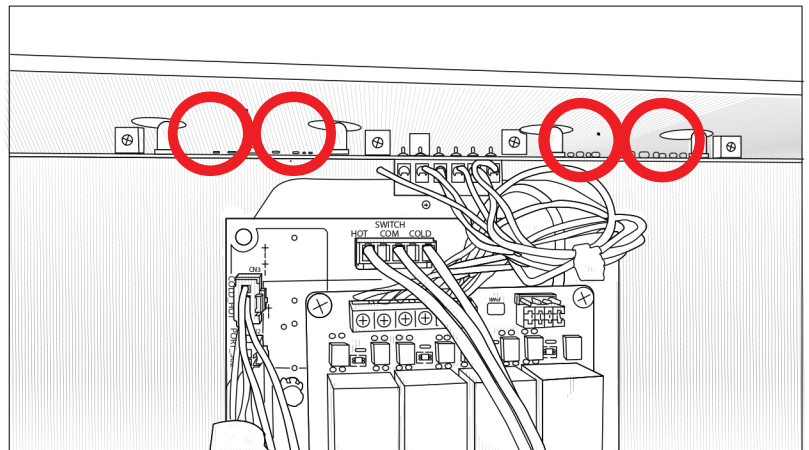
Once you have power to the unit you'll notice green indicator lights on the sensor strip next to each sensor, as well as a small adjustment screw.

Go ahead and adjust the screws (left more sensitivity, right for less sensitivity) until you have no green lights on the strip, wave your hand over the sensors to make sure you still get green lights as desired.

Continue to readjust until it's the desired level of sensitivity without any false green lights.

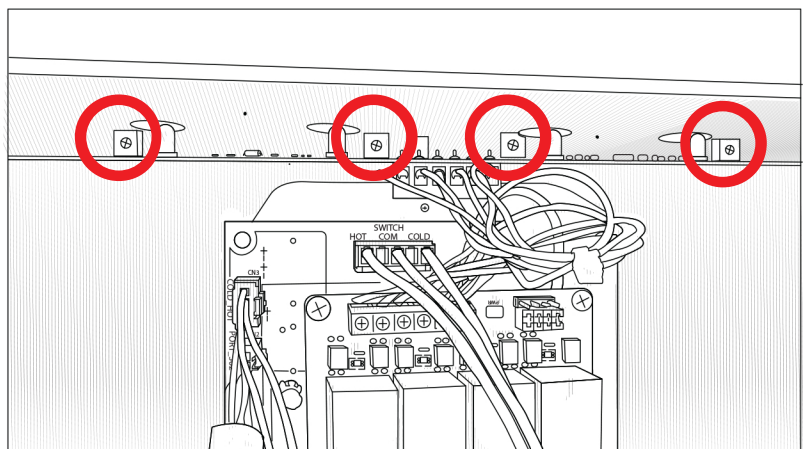
The red indicator lights next to each sensor indicate the sensor has power.

The green indicator light next each sensor means the sensor is sensing a hand over it to dispense water.

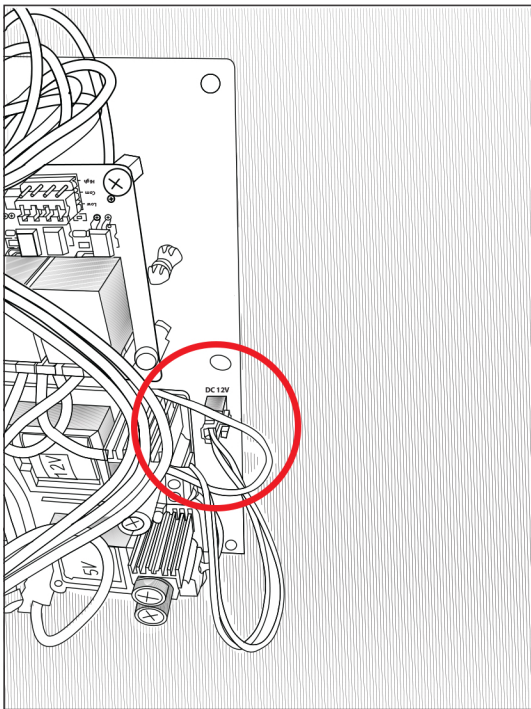


The four proximity sensitivity adjustment screws are located next to each sensor.

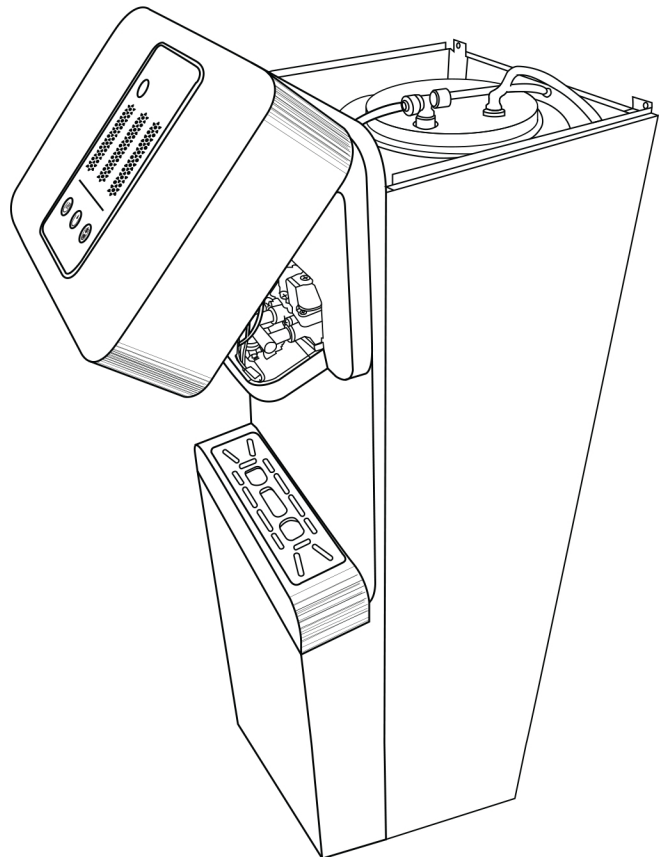
Turn to the left to increase proximity sensitivity. Turn to the right to decrease proximity sensitivity.



**6** Unplug the power from the unit.



**7** Plug the DC12 plug back in if you unplugged it.



**8** Reattach the faceplate, and the top cover.